



EXPERT IN PROCESS VALVE

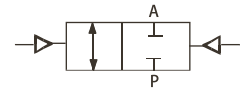


EV Series
Exhaust Valve

GENERAL FEATURES

- 2/2-way Exhaust valve Series EV10/20/30 for EPS foam machinery;
- Valve body material stainless steel AISI304, AISI316 and AISI316L;
- Valve small volume, long life, easy to install;
- Liberty (double acting);
- It can be designed according to the application requirements, using the aluminum alloy cylinder as the control actuator.

Symbol



Double acting

◆ **How to order**



EV10-50



EV20-50

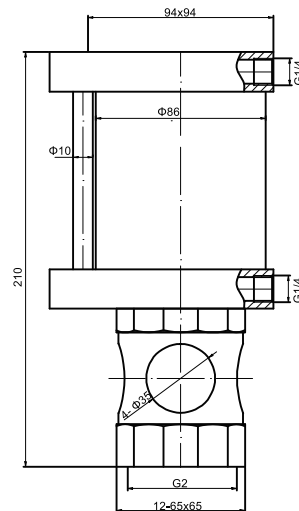


EV30-50

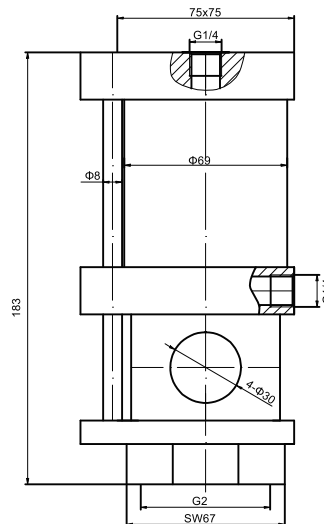
- Improvement design for rack and pinion
- Bore size 32~400mm
- High performance & reliability;
- Fully compliance with all the latest international standards;
- Innovations and patented solutions for a universal drive shaft;
- Multifunction position indicator.

◆ **Dimensions [mm]**

EV10-50



EV20-50



◆ **Specifications**

Material of body	Stainless Steel & Gunmetal
Material of actuator	Aluminium
Seat seal	PTFE (as required NBR、FKM、EPDM)
Ambient and fluid	Water, alcohol, oil and light viscosity fluid
Spindle/Swivel plate	Stainless steel
Max. viscosity	Max.600mm /s ²
Disc material	PTFE
Medium temp.	-10 ~ +120°C
Ambient temp.	-10 ~ +80°C
Installing	As required, preferably with handwheel in upright position
Control Medium	Neutral gases air
Max.pilot pressure	10 bar
Max.working pressure	16 bar