



EXPERT IN PROCESS VALVE



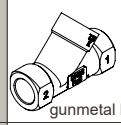
PV600 Series

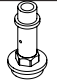
Angle seat valve (Gunmetal body)

How to Order

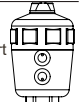
PV 6 0 0 PX 015 50 NC S M **SV1**

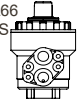
Series

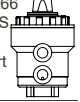
6 

0 标准柱 

Type of Actuator

P nylon PA66 clean port 

PX nylon PA66 built-in SS liner NAMUR port 

PR nylon PA66 built-in SS liner clean port 

Port size

015	1/2"
020	3/4"
025	1"
032	1-1/4"
040	1-1/2"
050	2"
065	2-1/2"

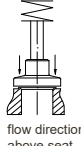
Acting type

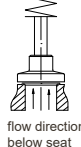
S	Single acting
D	Double acting

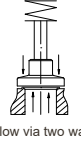
Control Function

NO	Normally Open
NC	Normally Closed
DA	Liberty (double acting)

Flow Direction

M 

G 

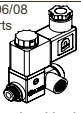
T 

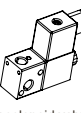
Thread type

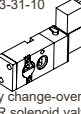
Blank	BSP(G)
N	NPT
R	PT(Rc)

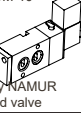
Note: G (DIN ISO228-1)
NPT (ASME B 1.20.1)
Rc (ISO 7-1)


Solenoid Valve

SV1 AX23-06/08 S.S parts 

SV2 3/2-way solenoid valve 3V1-06 

SV3 3/2-way solenoid valve EV25/23-31-10 

SV4 5/2-way change-over NAMUR solenoid valve EV2531M-10 

SV5 5/2-way NAMUR solenoid valve DX23-06/08 brass body 

Seal/Seat

Blank	Seal	Seat
B1	NBR	PTFE
V1	VITON	PTFE
V2	VITON	PEEK

Body material

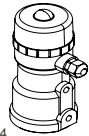
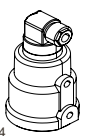

T3	Gunmetal (Rg5)
----	----------------

Actuator Size

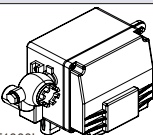
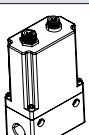
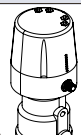
	Standard Actuator Size mm		
	P	PX	PR ^②
DN15	40,50	40,50	32,40,50
DN20	40,50,63	40,50,63	32,40,50,63
DN25	50,63,80,100	50,63,90	50,63,90
DN32	63,80*100	63,90	63,90
DN40	63,80,100	63,90	63,90
DN50	63,80,100	63,90	63,90
DN65	80,100	90	90,110

Accessories

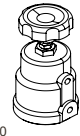
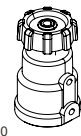
Proximity Switch for Position Feedback

PVS514  PVS414  PVS314 


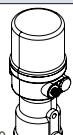
Process Controller

PVT1000L  PVT100  PVT200 

Manual Overried for Stroke Limiting

PVM10  PVM20 

Position locator

PVT300  PVT400 

备注: ② The PR 32mm actuator is mainly suitable for mini type angle seat valves DN08/10/15/20.
③ This code is only applicable to the PV600 series pneumatically operated angle seat valves.
④ For more solenoid valve options, refer to the valve accessory unit.

GENERAL FEATURES

- High flow due to angle seat design
- Anti-waterhammer design (fluid entry under the disc)
- Standard gland packing suitable for Vacuum up to 10⁻²mbar
- Wide range of piston-type operators (32 - 40 - 50- 63 - 90 - 110 -125 -150 - 160mm dia.) rotatable through 360°, for maximum performance at different minimum pilot pressures
- High performance, maintenance-free stuffing box
- Valve body material: AISI 304, AISI 316, AISI316L and Gunmetal
- Valve ends: Female thread, Male thread, Butt welds, Socket welds, Flange ends, and Tri-clamp ends.
- Range available from 1/4" to 4" in the double acting versions, spring return N.C. from above and below the seat, spring return N.O. from below the seat.
- The variations in the actioning of the valve, the several combinations and the possibility to intercept the fluid from above or below the seat, originate multiple versions of the automatic valve.
- On the basis of the kind of valve and the variations of pressure that must be intercepted, the necessary control pressure can be individuated, and consequently, the code for the corresponding valve.

Characteristics

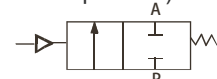
Orifice	DNø8...100
Body materials	Cast stainless steel 304,316,316L, gunmetal
Actuator material	PA (Glass fibre filled PA) Stainless steel 304 Aluminium
Seal material	PTFE(NBR,FKM,EPDM on request)
Medium	Air,water, alcohol,oils, fuel, hydraulic fluids,salt solution, alkali solutions,organic solvents, steam
Pressure	0-16Bar (steam from 180°C, from 0 to 10Bar) depending on the size and model chosen (see catalogue for details)
Viscosity	Max.600cst (mm ² /s)
Packing gland (with silicone grease)	PTFE V-ring with spring compensation
Medium temperature	-10 to +180 °C with PTFE seal
Ambient temperature	PA nylon -10 to 90 °C Stainless steel -10 to 150 °C Aluminium -10 to 150 °C
Installation	As required, preferably with actuator in upright position The valves can be mounted in any position without affecting operation Pipe connections (G*) have standard combination thread according to ISO 228/1 and ISO 7/1 Installation/maintenance instructions are included with each valve
Control medium	Neutral gases, air
Max.pilot pressure	PA nylon actuator size Φ32...63 10 bar PA nylon actuator size Φ90...110 8 bar Stainless steel 10 bar Aluminium 10 bar
Connection	Female thread ends DNø8...DN80 Male thread ends DN15...DN65 Butt weld ends DN15...DN65 Socket weld ends DN15...DN65 Flange ends DN15...DN100 Tri-clamp ends DN15...DN65 Gunmetal body DN13...DN65

Options and accessories

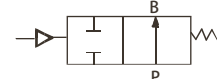
- Signaling box or compact signaling unit
- Stroke limiter for opening
- Manual safety device
- Positioner for proportional control
- Optical position indicator on 32, 40, 50, 63, 90, 110,125,150,160mm.
- NAMUR port mounting pilot is optional,except to 32mm
- NET-INOX passivation treatment on stainless steel body valve
- ATEX 94/9/EC versions for potentially explosive atmospheres
- Polt operated drain valve assembly with electronic timer (see solenoids, coils & Accessories sections)
- Male thread ,Weld end, clamp and flange end connections are available on request
- Vacuum applications up to 9x10⁻³ mbar

Symbol

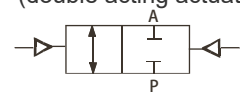
Control Function A
 (closed by spring force in rest position)



Control Function B
 (open in rest position)



Control Function I
 (double acting actuator)



Applications

- Industrial gas compression and separation
- Biological gas generation
- Industrial steam sterilization and separation
- Heat-exchange system.
- Polystyrene foaming and packaging
- Beverage processing
- Dying and purification
- Filling system
- Mechanical equipment and automation machinery
- Petroleum and chemical industry






PV600PR2563NC



PV600PX2550NCD

◆ PV600 series Pneumatic Angle Seat Valve DN15 -DN65

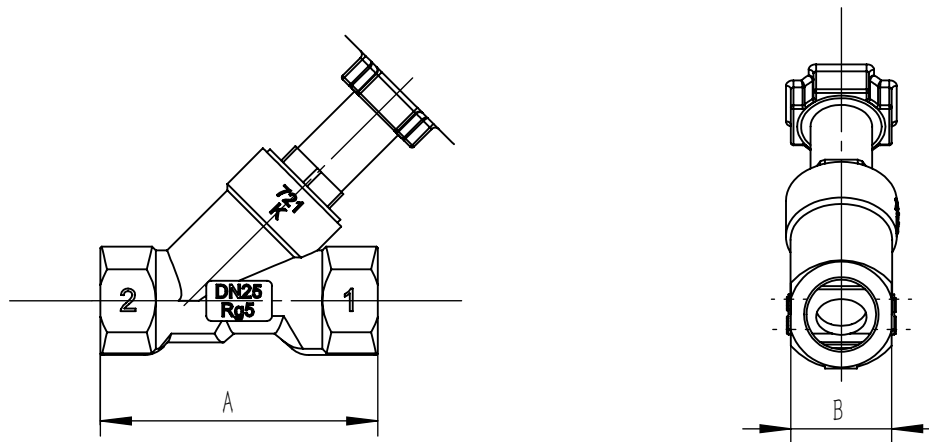
DN15 - DN65+ Actuator

Shows		
PV500PX	PV500PR	PV500P
		
PA(NAMUR interface)	PA (clean port)	PA(clean port, classic)
Control pressure	2-10 bar	
Working pressure	Vacuum as low as -0.9 bar(g)	
Medium Temp.	-40 ~ +180°C	
Temp. of Ambient	-40 ~ +60°C	
Body material	Gunmetal Rg5	
Standard of Pipeline interface	G(DIN ISO228-1), NPT (ASME1.20.1), Rc (ISO7-1)	
Optional Accessories	Pilot Valve/ Regulating the Cone /Manual Override for Stroke Limiting/ Proximity Switch for Position Feedback/Position locator& Process Controller	

◆ Dimensions [mm]

DN15 - DN65

40 /50 /63 /80 /90 /100 /110 /125 mm Actuator



Gunmetal body dimentsons

Port size	DN (mm)	A	B
* 3/8"	DN10	/	/
* 1/2"	DN15	88	27
* 3/4"	DN20	95	34
* 1"	DN25	105	41
* 1 1/4"	DN32	110	50
* 1 1/2"	DN40	130	55
* 2"	DN50	150	70
* 2 1/2"	DN65	190	85