



EXPERT IN PROCESS VALVE



**PV3A0** Series  
**Angle seat valve (Weld end)**

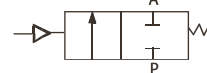


### GENERAL FEATURES

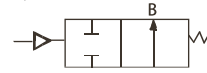
- High flow due to angle seat design
- Anti-waterhammer design (fluid entry under the disc)
- Standard gland packing suitable for Vacuum up to 10<sup>-2</sup>mbar
- Wide range of piston-type operators (32 - 40 - 50- 63 - 90 - 110 -125 -150 - 160mm dia.) rotatable through 360°, for maximum performance at different minimum pilot pressures
- High performance, maintenance-free stuffing box
- Valve body material: AISI 304, AISI 316, AISI316L and Gunmetal
- Valve ends: Female thread, Male thread, Butt welds, Socket welds, Flange ends, and Tri-clamp ends.
- Range available from 1/4" to 4" in the double acting versions, spring return N.C. from above and below the seat, spring return N.O. from below the seat.
- The variations in the actining of the valve, the several combinations and the possibility to intercept the fluid from above or below the seat, originate multiple versions of the automatic valve.
- On the basis of the kind of valve and the variations of pressure that must be intercepted, the necessary control pressure can be individuuated, and consequently, the code for the corresponding valve.

### ◆ Symbol

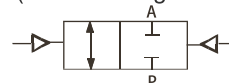
**Control Function A**  
(closed by spring force in rest position)



**Control Function B**  
(open in rest position)



**Control Function I**  
(double acting actuator)



### ◆ Characteristics

Orifice	DNø8...100	
Body materials	Cast stainless steel 304,316,316L, gunmetal	
Actuator material	PA (Glass fibre filled PA) Stainless steel 304 Aluminium	
Seal material	PTFE(NBR,FKM,EPDM on request)	
Medium	Air,water, alcohol,oils, fuel, hydraulic fluids,salt solution, alkali solutions,organic solvents, steam	
Pressure	0-16Bar (steam from 180°C, from 0 to 10Bar) depending on the size and model chosen (see catalogue for details)	
Viscosity	Max.600cst (mm <sup>2</sup> /s)	
Packing gland (with silicone grease)	PTFE V-ring with spring compensation	
Medium temperature	-10 to +180 C with PTFE seal	
Ambient temperature	PA nylon -10 to 90 C Stainless steel -10 to 150 C Aluminium -10 to 150 C	
Installation	As required, preferably with actuator in upright position The valves can be mounted in any position without affecting operation Pipe connections (G*) have standard combination thread according to ISO 228/1 and ISO 7/1 Installation/maintenance instructions are included with each valve	
Control medium	Neutral gases, air	
Max.pilot pressure	PA nylon actuator size Ø32...63	10 bar
	PA nylon actuator size Ø90...110	8 bar
	Stainless steel	10 bar
	Aluminium	10 bar
Connection	Female thread ends	DNø8...DN80
	Male thread ends	DN15...DN65
	Butt weld ends	DN15...DN65
	Socket weld ends	DN15...DN65
	Flange ends	DN15...DN100
	Tri-clamp ends	DN15...DN65
Gunmetal body	DN13...DN65	

### ◆ Options and accessories

- Signaling box or compact signaling unit
- Stroke limiter for opening
- Manual safety device
- Positioner for proportional control
- Optical position indicator on 32, 40, 50, 63, 90, 110,125,150,160mm.
- NAMUR port mounting pilot is optional,except to 32mm
- NET-INOX passivation treatment on stainless steel body valve
- ATEX 94/9/EC versions for potentially explosive atmospheres
- Polit operated drain valve assembly with electronic timer (see solenoids, coils & Accessories sections)
- Male thread ,Weld end, clamp and flange end connections are available on request
- Vacuum applications up to 9x10<sup>-3</sup> mbar

### ◆ Applications

- Industrial gas compression and separation
- Biological gas generation
- Industrial steam sterilization and separation
- Heat-exchange system.
- Polystyrene foaming and packaging
- Beverage processing
- Dying and purification
- Filling system
- Mechanical equipment and automation machinery
- Petroleum and chemical industry







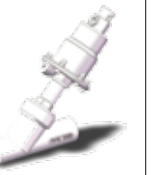
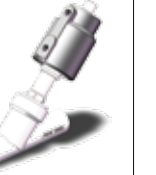

PV3A0PX2550NO



PV3A0S2550NC

◆ **PV3A0 series angle seat valve ordering code**

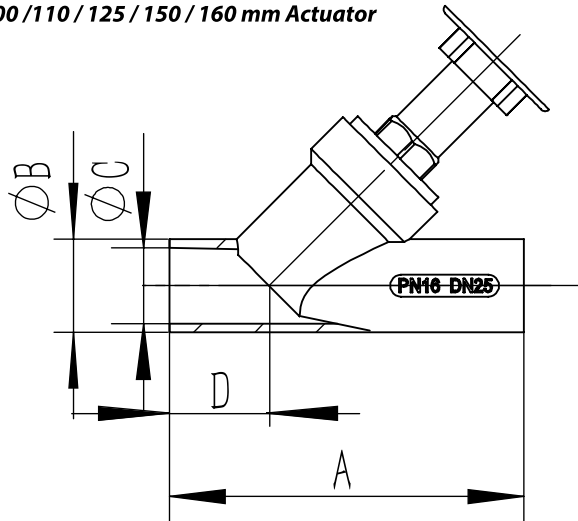
**DN15 - DN65+ Actuator**

Shows						
PV3A0PX	PV3A0PR	PV3A0P	PV3A0S	PV3A0SD	PV3A0A	PV3A0AE
						
PA(NAMUR interface)	PA(clean port)	PA(classical clean port)	Stainless steel	Stainless steel (Polished)	Aluminum A	Aluminum AE
Control Pressure	2~10 bar					
Working Pressure	vacuum is as low as -0.9 bar(g)					
Temp. of Medium	-40 ~ +180°C					
Temp. of Ambient	-40 ~ +60°C					
Body Material	304 / 316 / 316L					
Standard of Pipeline interface	DIN EN ISO1127/ISO4200 SMS 3008					
Optional Accessories	Pilot Valve/Regulating the Cone/Manual Override for Stroke Limiting/Proximity Switch for Position Feedback/Position locator&Process Controller					

◆ **Dimension [mm]**

**DN10 - DN65**

**40 / 50 / 63 / 80 / 90 / 100 / 110 / 125 / 150 / 160 mm Actuator**



Body dimation of Weld ends

Port size	DN (mm)	A	B	C	D
* 3/8"	DN10	/	/	/	/
* 1/2"	DN15	100	15	21	18
* 3/4"	DN15	115	21	27	30
* 1"	DN20	130	28	34	30
* 1 1/4"	DN20	145	37	42	30
* 1 1/2"	DN25	160	40	48	30
* 2"	DN25	190	52	60	30
* 2 1/2"	DN25	230	66	76	40